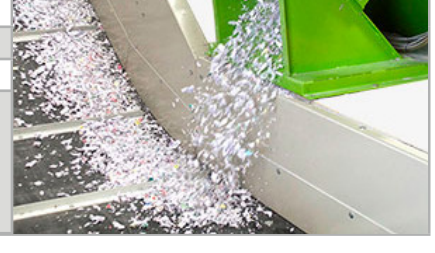
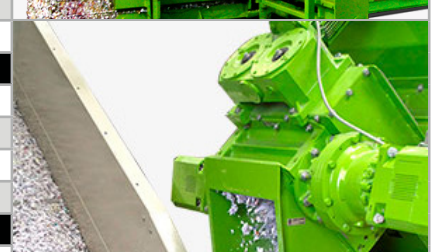
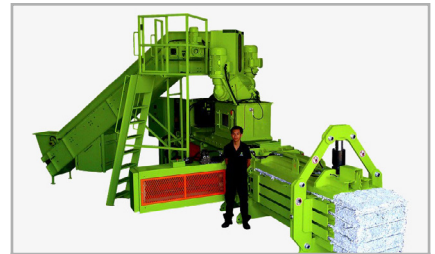


# Balers

## maximize revenue from your recycled paper

Two standard baler models suit the majority of document destruction customers, Shred-Tech can also offer models to suit customers specific requirements. Shred-Tech Workhorse Balers are manufactured in Europe. These robust Automatic Horizontal Auto-Tie Balers suit continuous applications, have a low ongoing maintenance cost and include a warranty supported by Shred-Tech's famous service network. We recommend these balers to customers who value reliability and longevity.



Specification	Workhorse 7575-22kW	Workhorse 1175-30kW
Feed Opening Dimensions	1,000 x 700 mm (39.37"x27.5")	1,300 x 1,040 mm (51"x41")
Bale Chamber WxHxL	750 x 770 x 1,500 mm (29.5"x30.3"x59")	1,100 x 750 x 2,400 mm (43"x30"x95")
Bale Size Expanded	750 x 770 x Adjustable (29.5"x30.3")	1,100 x 770 x Adjustable (43.3"x30.3")
Bale Weight (OCC)	Up to 450 kg (992.1 lb)	Up to 750 kg (1,650 lb)
Power KW / HP	22 KW / 29.5 HP	30 KW / 40 HP
Main Cylinder (OD x Stroke)	160 x 1,500 mm (6.3"x5")	180 x 2,000 mm (7"x78.7")
Tension Cylinder	160 x 105 stroke (6.3"x4")	200 mm(7.58") Diameter 150 mm(5.9") Stroke
Normal Force	50 tons	74 tons
Normalised Force	8.7 kg/cm2 (123.7 lb/inch2)	9 kg/cm2 (128 lb/inch2)
Tension Force	up to 200 tons	up to 340 tons
Tension Type	3 x hinged Channel	3 x hinged Channel
Cycle Time (No Load)	27 secs	18 secs
Cycles per Minute	2	3
Tie Cycle	25 sec	20 sec
Production (O.C.C)	3 ton per hour	7 ton per hour @ 60kg/m3
Machine Weight	8 ton (15,432.3 lb)	16 ton (30,864.7 lb)
Oil Reservoir	400 litres (88 gallons)	800 litres (176 gallons)
Auto Tier	Hydraulic - Pull	Hydraulic - Pull
Number of Ties	4	4
Platen Stroke	1,500 mm (59")	2,000 mm (78.7")
Main baler body frame	Hardox 450 press chamber	Hardox 450 press chambe
Shear Knife	Replaceable	Replaceable
Over Shear Travel	550 mm (21.6")	650 mm (25.5")
Wire Roll size	ID200 x OD340 x T150 mm (8 off) (7.8"x13.3"x5.9")	850/500 x 500mm (33.5"x19.7"x19.7")
Wire Spools or Coils	50 kg /110 lb or 500-1,000 kg /1,100- 2,200 lb	500 kg (1102.31 lb)
Wire Spec	2.7-3 mm (0.1"-0.11")	2.5 - 3.5 mm (0.09"- 0.11")
Hydraulic System	Workhorse 7575-22kW	Workhorse 1175-30kW
Type	Regenerative	Regenerative
Hydraulic cooling	Air to oil Cooling (option)	Air to oil Cooling (option)
Hydraulic filtration	Inside Tank	Inside Tank
Hydraulic pump brand	Bucher (Germany)	Bucher (Germany)
Main Cylinder Brand	ATS (Europe)	ATS (Europe)
Electrical System	Workhorse 7575-22kW	Workhorse 1175-30kW
PLC brand	Siemens (Germany)	Siemens (Germany)
Operator Interface	Digital	Digital
Main motor control	Star/Delta	Star/Delta
Controller Brand	Telemecanique (France)	Telemecanique (France)
Investment	Workhorse 7575-22kW	Workhorse 1175-30kW
Warranty	12 Months	12 Months
Lease Package	Yes	Yes
Life (Normalised)	10 Years	10 Years
<b>Shred-Tech Corp.</b> 295 Pinebush Rd. Cambridge, Ontario N1T 1B2	<b>Shred-Tech Asia Co., Ltd.</b> 789/52 Moo 1, Nong-Kham, Sriracha, Chonburi, 20230	<b>Shred-Tech® Australasia</b> PO Box 620, South Yarra, Victoria 3141 Australia
CANADA +1 (519) 621-3560 shred@shred-tech.com	THAILAND +66 3834 8250 info@shred-tech.asia	AUSTRALIA +61 0498 730 684 justin@shred-tech.asia